

Publicado em 01.01.2024

Atualizado em xx.xx.20xx



Pag 2



Pag 11



Pag 12



Pag 15



Pag 18



Pag 19



Pag 22



Pag 26

18"-20/65-18

Domaine : Rallye Asphalte Wet

Dimension : 20 / 65 - 18

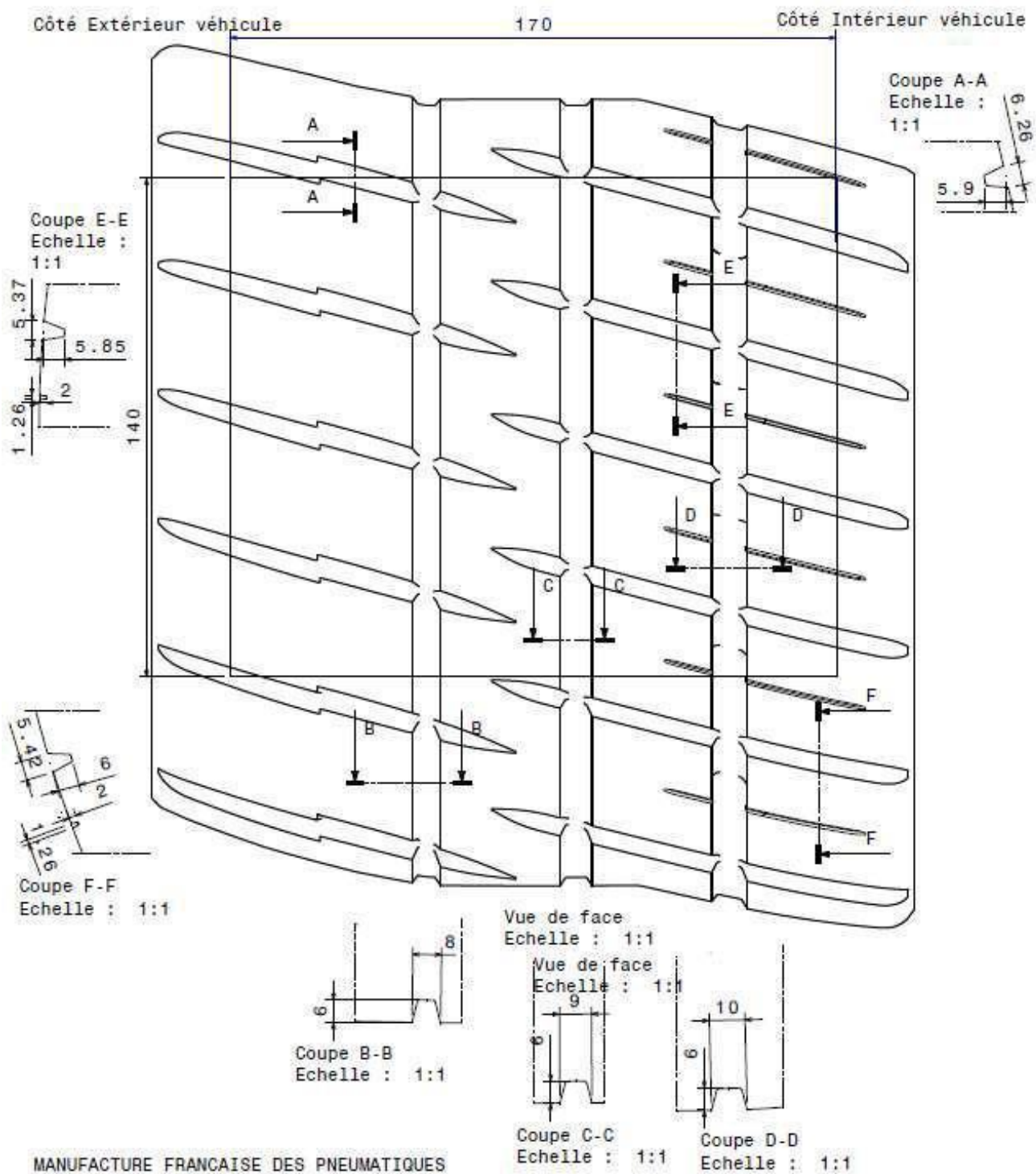
Plan de la sculpture : Pilot Sport A MW1

Entaillement Surfacique dans fenetre

règlementaire > ou = 27.5 % avec les entailles > 1.8 mm de profondeur comme avec les entailles > 5.5 mm de profondeur.



Clermont-Ferrand le 03/07/2019



MANUFACTURE FRANCAISE DES PNEUMATIQUES
 MICHELIN CLERMONT-FERRAND
 PROPRIETE EXCLUSIVE DE NOTRE SOCIETE
 REPRODUCTION OU UTILISATION INTERDITE SANS
 NOTRE ACCORD ECRIT

17"-19/63-17

Domaine : Rallye Asphalte Wet

Dimension : 19 / 63 - 17

Plan de la sculpture : Pilot Sport A MWI

Entaillement surfacique dans fenêtre

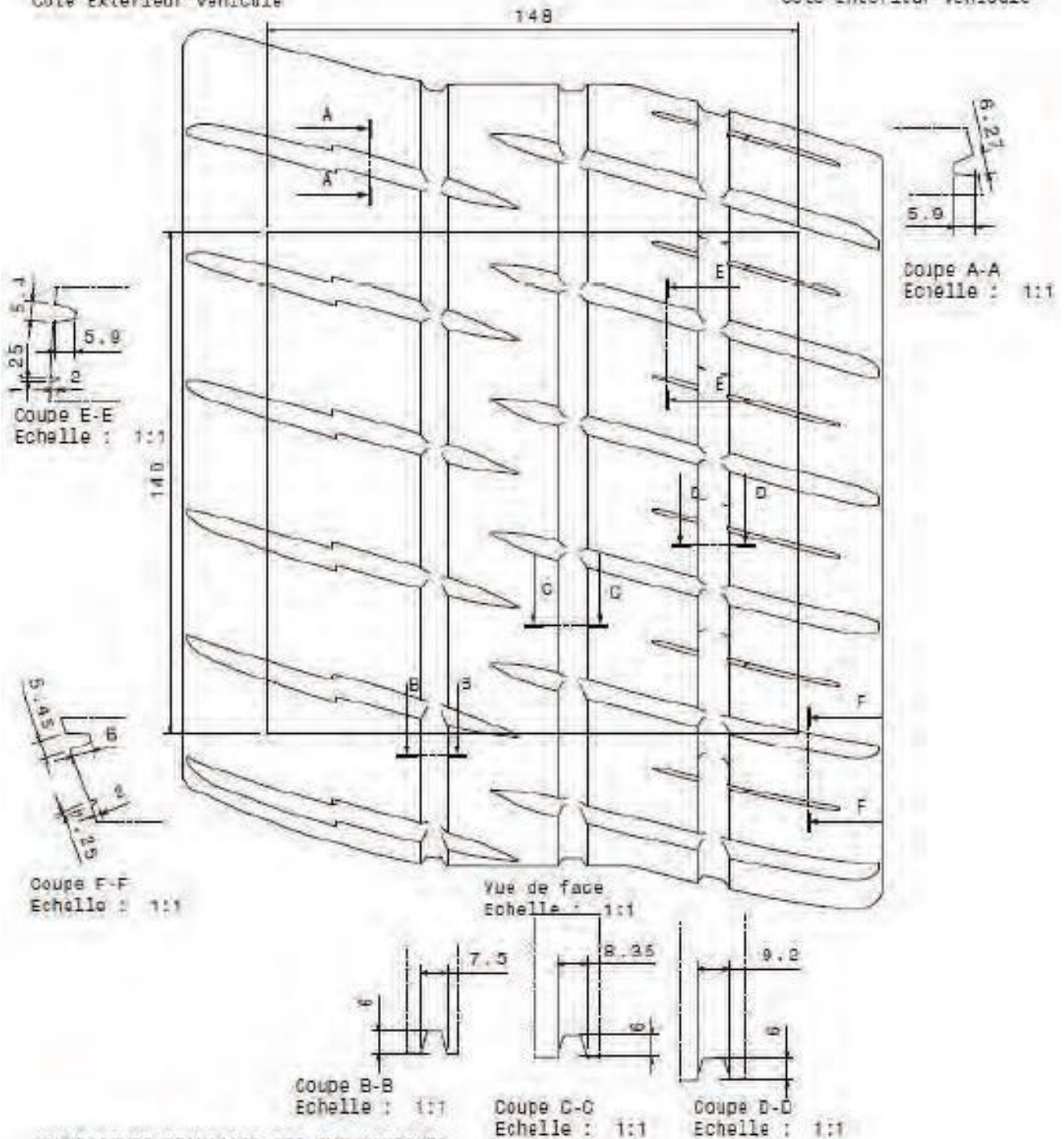
règlementaire > ou = 27.5 % avec les entailles > 1.8 mm de profondeur comme avec les entailles > 5.5 mm de profondeur.



clermont-ferrand le 18/09/2019

Côté Extérieur véhicule

Côté Intérieur véhicule



MANUFACTURE FRANCAISE DES PNEUMATIQUES
MICHELIN CLERMONT-FERRAND
PROPRIETE EXCLUSIVE DE NOTRE SOCIETE
REPRODUCTION OU UTILISATION INTERDITE SANS
NOTRE ACCORD ECRIT

16"-19/60-16

Domaine : Rallye Asphalte Wet

Dimension : 19 / 60 - 16

Plan de la sculpture : Pilot Sport A MW1

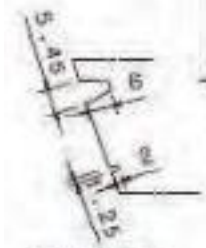
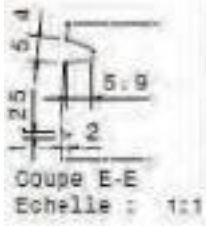
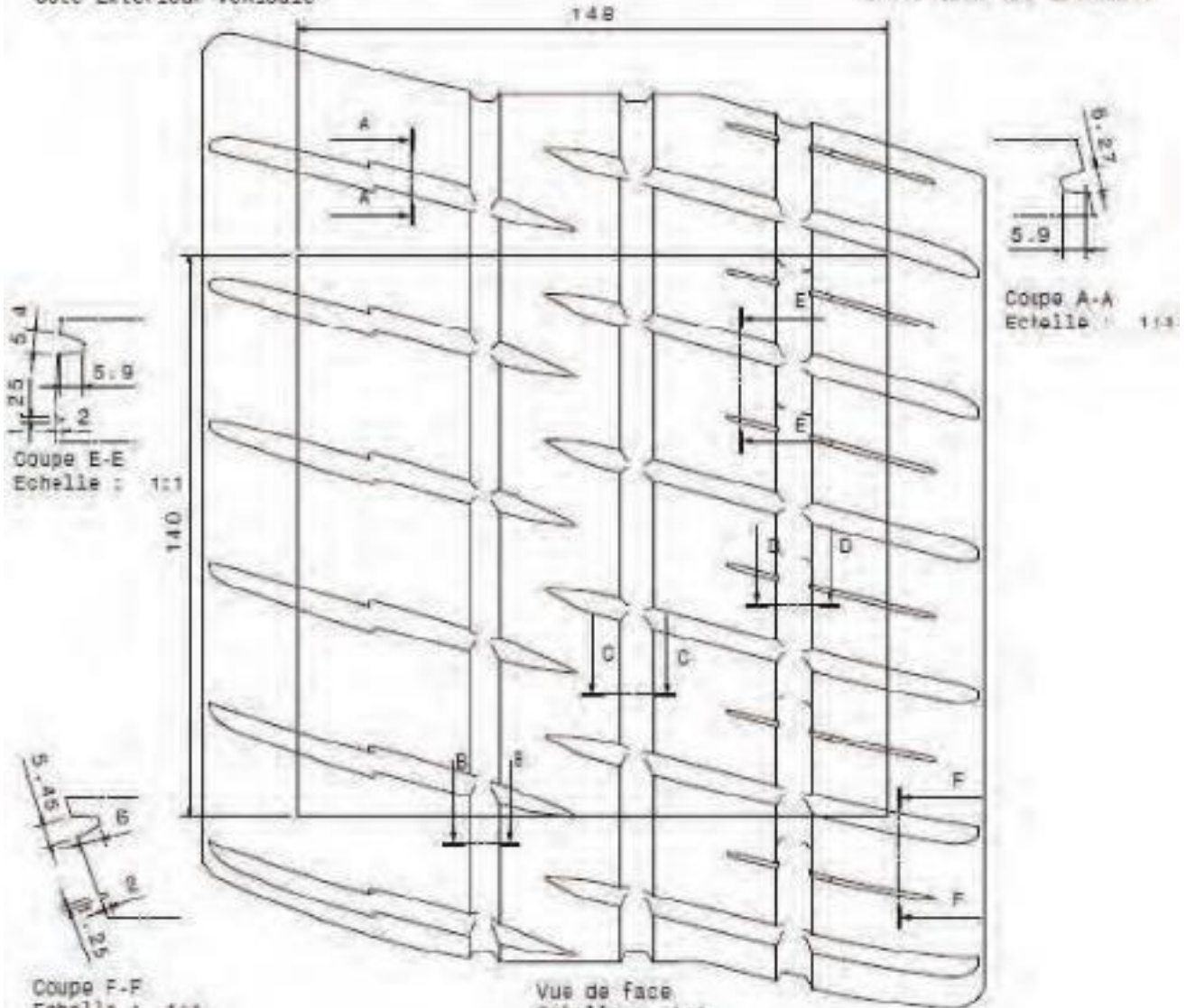
Entaillement Surfaccique dans fenetre
reglementaire > ou = 27.5 % avec les entailles > 1.8 mm de
profondeur comme avec les entailles > 5.5 mm de profondeur.



Clermont-Ferrand le 23/09/2018

Côté Extérieur véhicule

Côté Intérieur véhicule



Vus de face
Echelle : 1:1



Coupe B-B
Echelle : 1:1

Coupe C-C
Echelle : 1:1

Coupe D-D
Echelle : 1:1

MANUFACTURE FRANCAISE DES PNEUMATIQUES
MICHELIN CLERMONT-FERRAND
PROPRIETE EXCLUSIVE DE NOTRE SOCIETE
REPRODUCTION OU UTILISATION INTERDITE SANS
NOTRE ACCORD ECRIT

RGT Only – 24/65-18



PE00

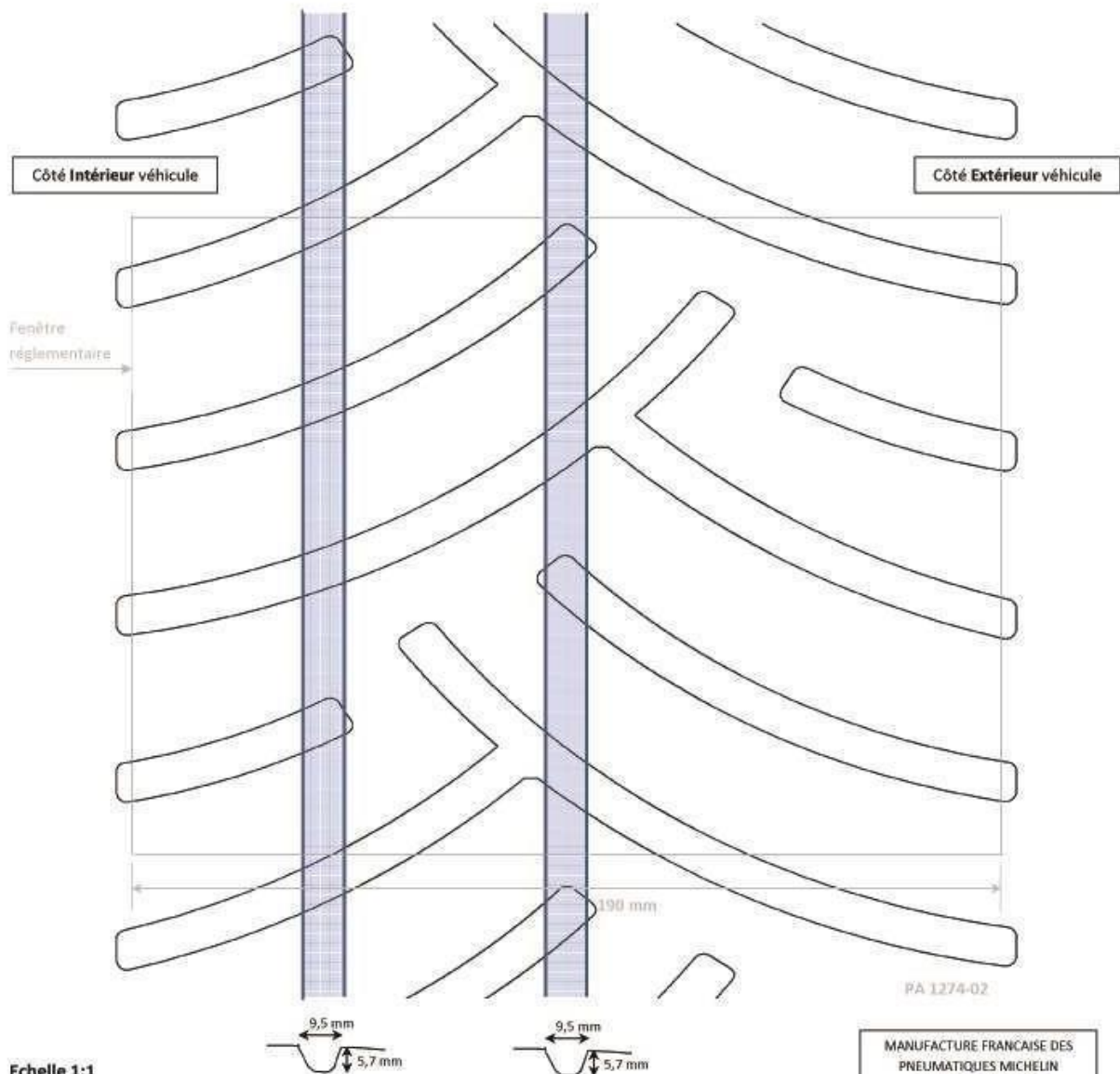
Domaine : Rallye Asphalte

Dimension : 24 / 65 - 18

Entaillement surfacique sur une fenêtre de 190 mm de large : 32,8 %

Clermont-Ferrand le 18/12/2013

Pneu Avant Droit



Echelle 1:1



MANUFACTURE FRANÇAISE DES
PNEUMATIQUES MICHELIN
CLERMONT-FERRAND
PROPRIÉTÉ EXCLUSIVE DE NOTRE
SOCIÉTÉ REPRODUCTION OU
UTILISATION INTERDITE SANS
NOTRE ACCORD ÉCRIT

RGT Only – 24/65-18

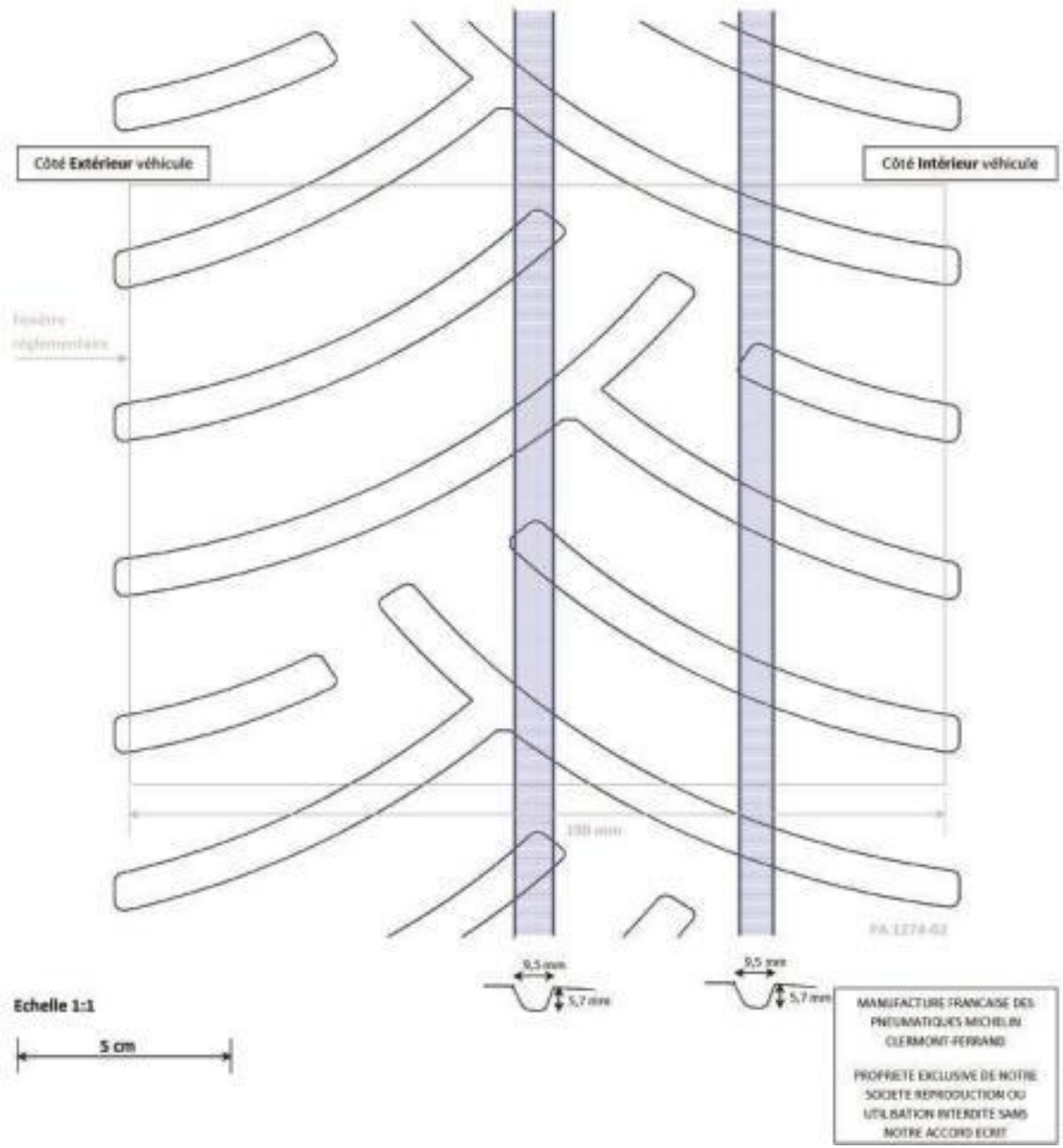


Domaine : Rallye Asphalte
Dimension : 24 / 65 - 18
Entaillement surfacique global : 32,8 %

PE00

Clermont-Ferrand le 18/12/2013

Pneu Avant Gauche



RGT Only – 29/65-18



PE00

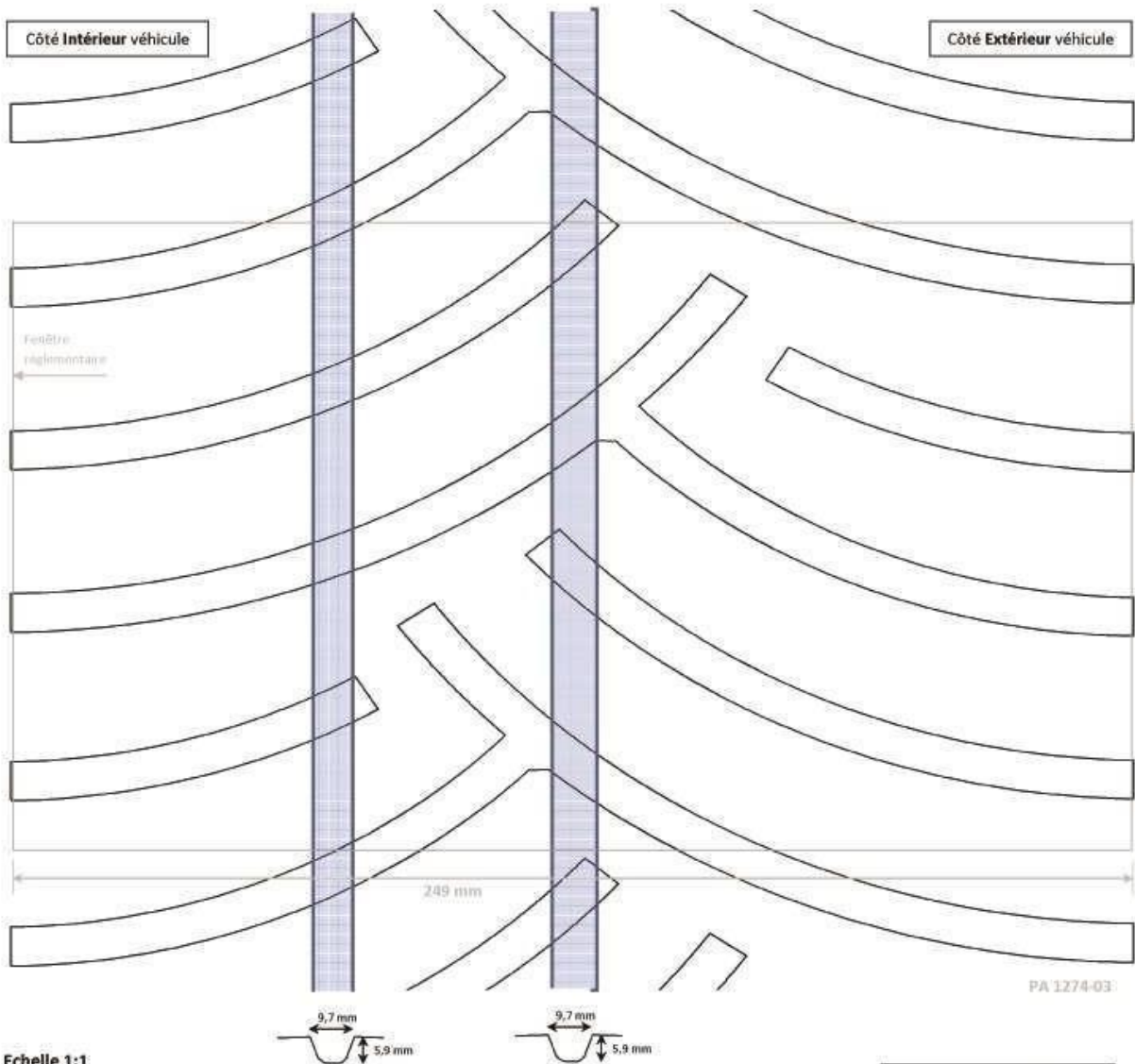
Domaine : Rallye Asphalte

Dimension : 29 / 65 - 18

Entaillement surfacique sur fenêtre de 249 mm de large : 31 %

Clermont-Ferrand le 18/12/2013

Pneu Arrière Droit



Echelle 1:1

5 cm

MANUFACTURE FRANCAISE DES
PNEUMATIQUES MICHELIN
CLERMONT-FERRAND

PROPRIETE EXCLUSIVE DE NOTRE
SOCIETE REPRODUCTION OU
UTILISATION INTERDITE SANS
NOTRE ACCORD ECRIT

RGT Only – 29/65-18



PE00

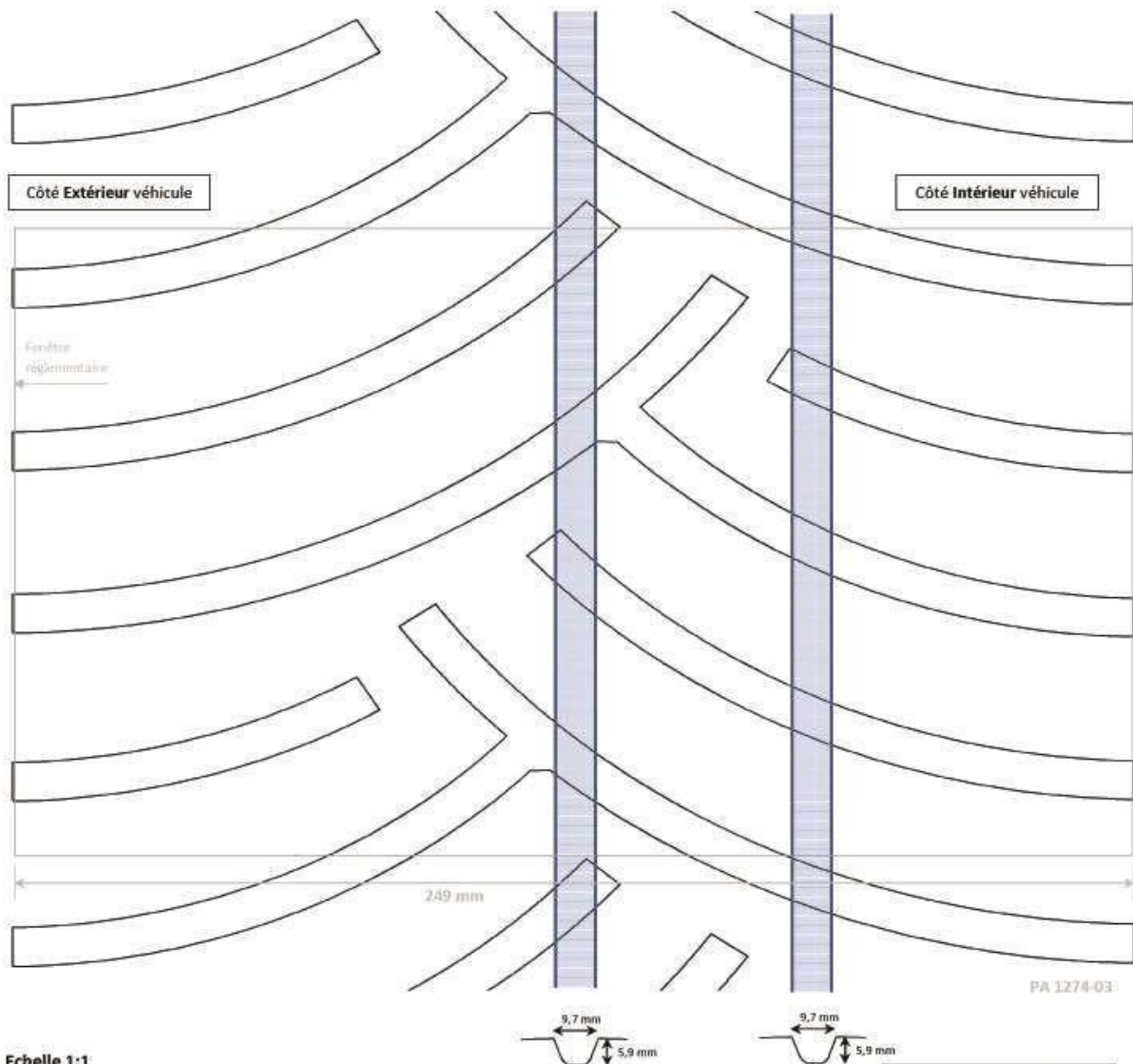
Domaine : Rallye Asphalte

Dimension : 29 / 65 – 18

Entaillement surfacique sur fenêtre de 249 mm de large : 31 %

Clermont-Ferrand le 18/12/2013

Pneu Arrière Gauche

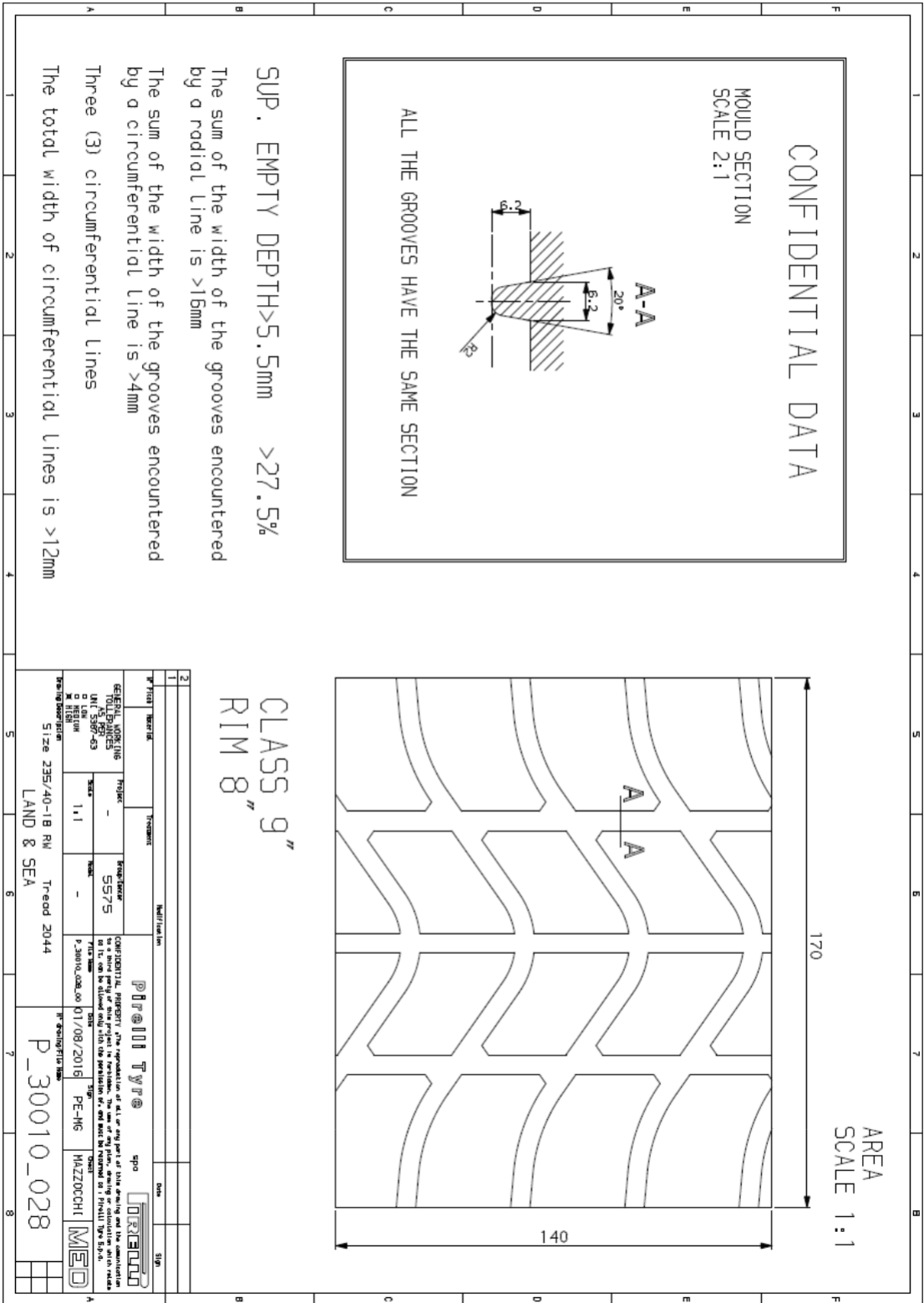


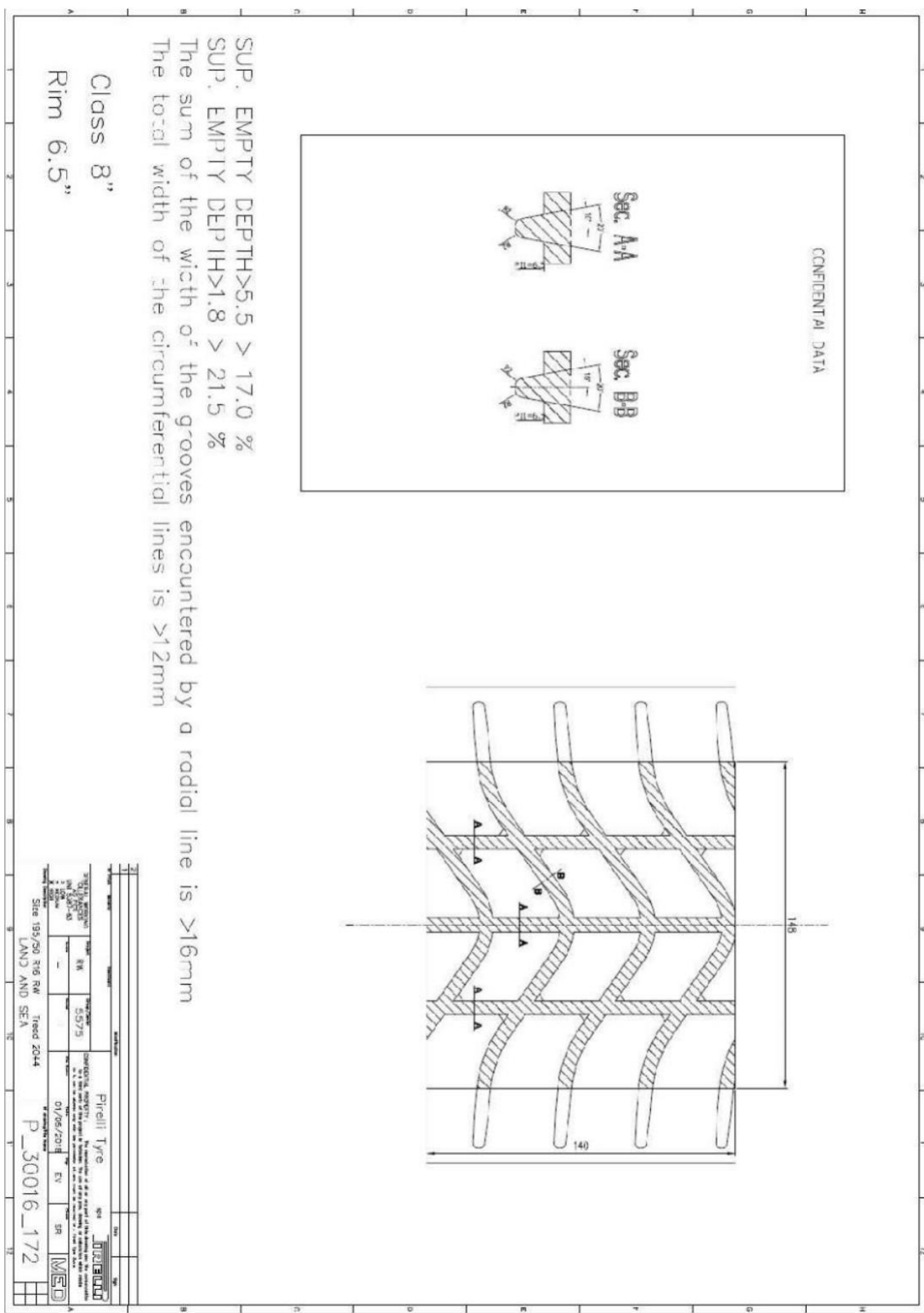
Echelle 1:1



MANUFACTURE FRANCAISE DES
PNEUMATIQUES MICHELIN
CLERMONT-FERRAND

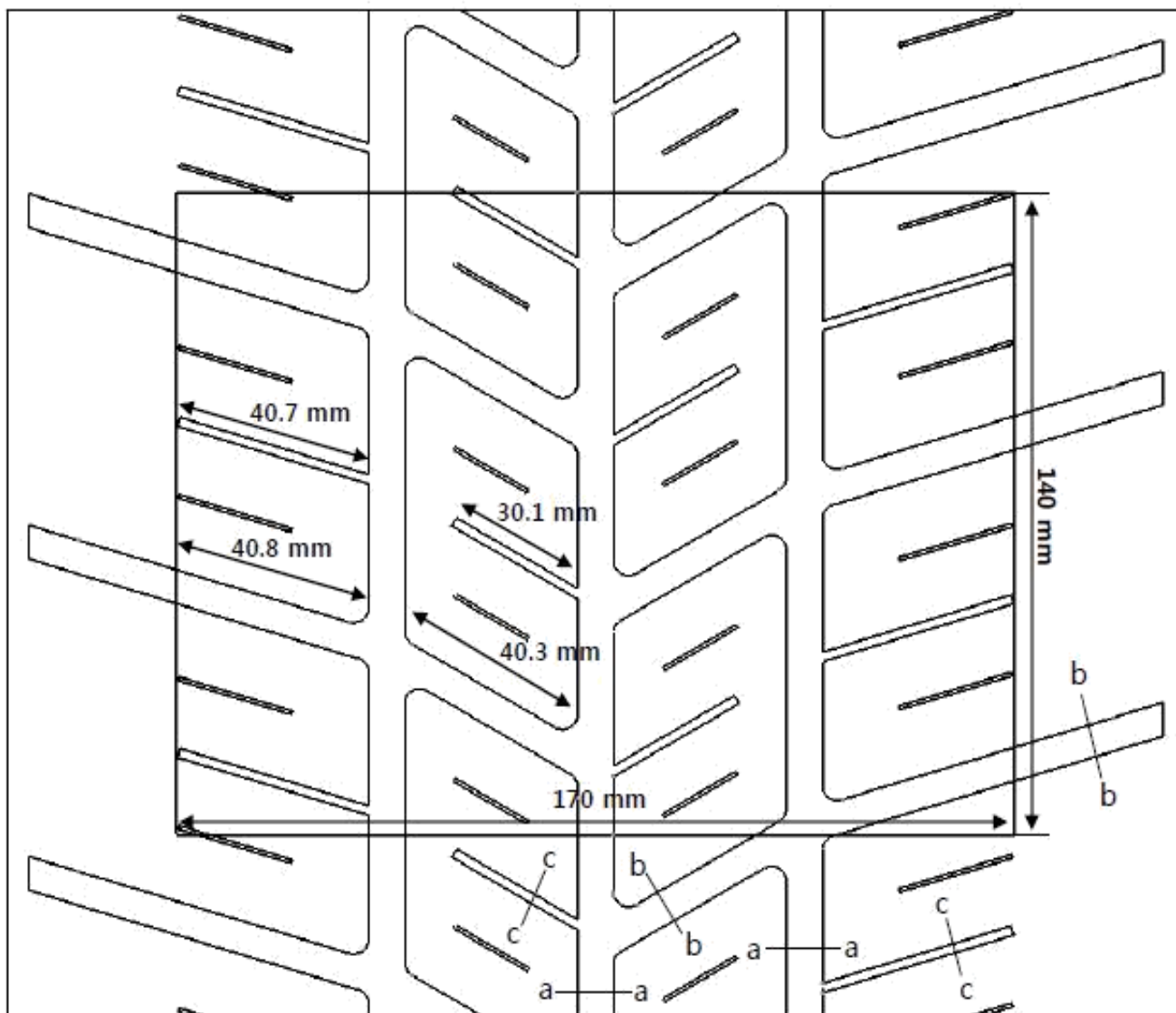
PROPRIETE EXCLUSIVE DE NOTRE
SOCIETE REPRODUCTION OU
UTILISATION INTERDITE SANS
NOTRE ACCORD ECRIT





18" - 210/650R18

Product : Ventus Z210



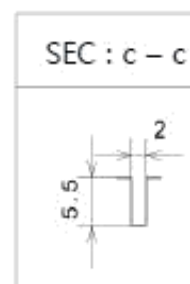
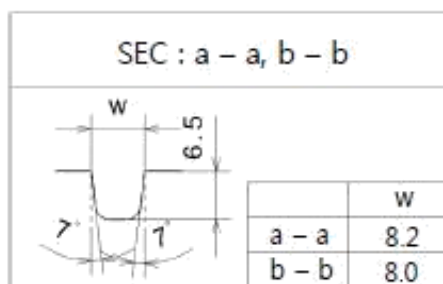
Class 9" (Rim 8")

a - a groove width / depth : 8.2 mm / 6.5 mm

b - b groove width / depth : 8.0 mm / 6.5 mm

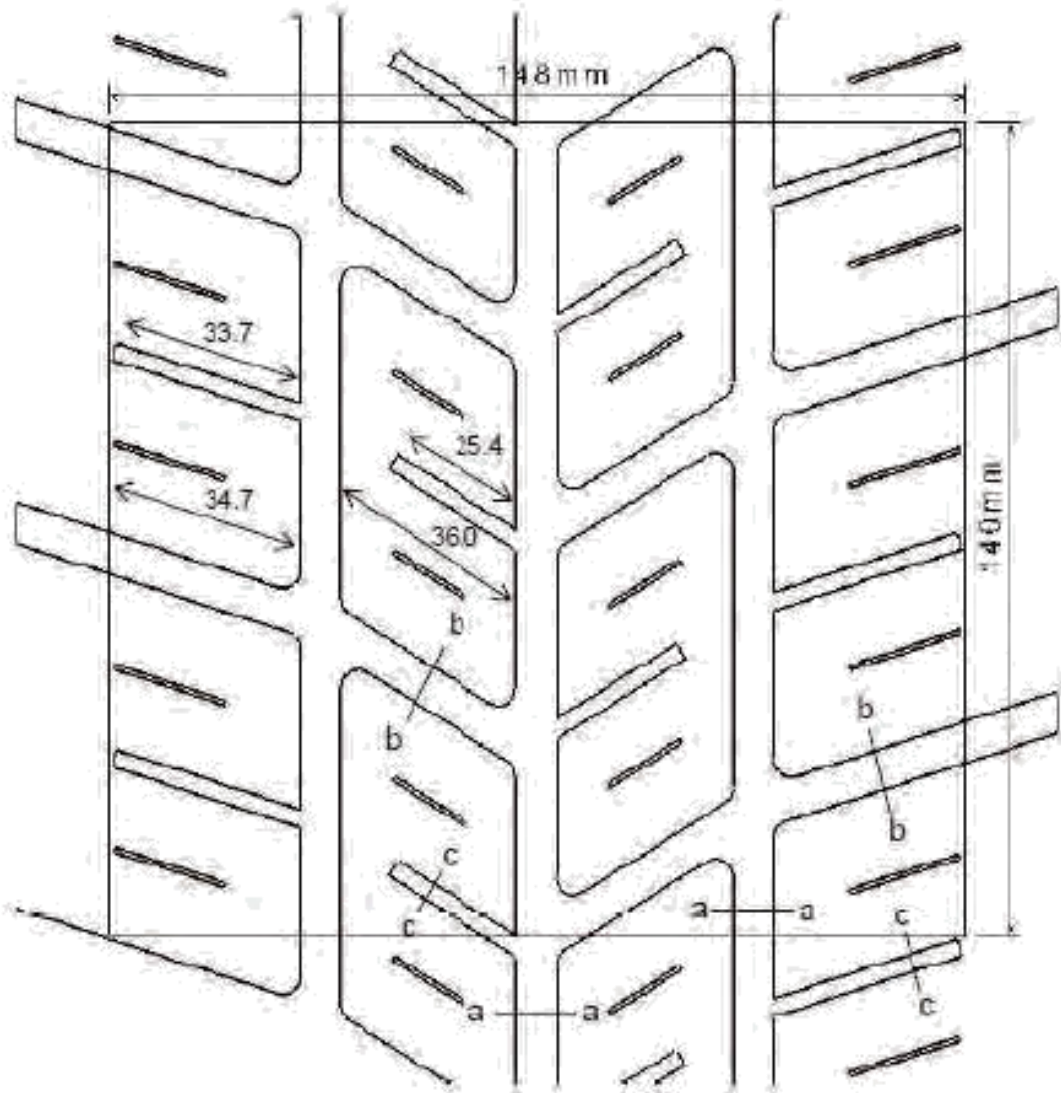
Empty Depth > 5.5mm : 27.5%

Control Surface = 23800 mm²



17" - 180/625R17

Product : Ventus Z210



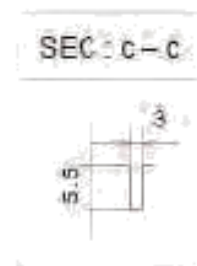
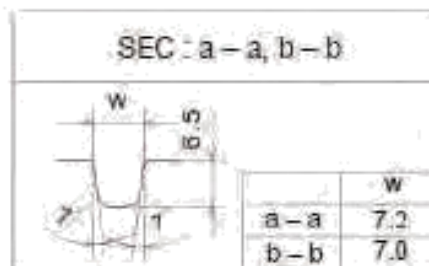
Width of Rim/Tyre Assembly : 7.5" ~ 8"

a - a groove width / depth : 7.2 mm / 6.5 mm

b - b groove width / depth : 7.0 mm / 6.5 mm

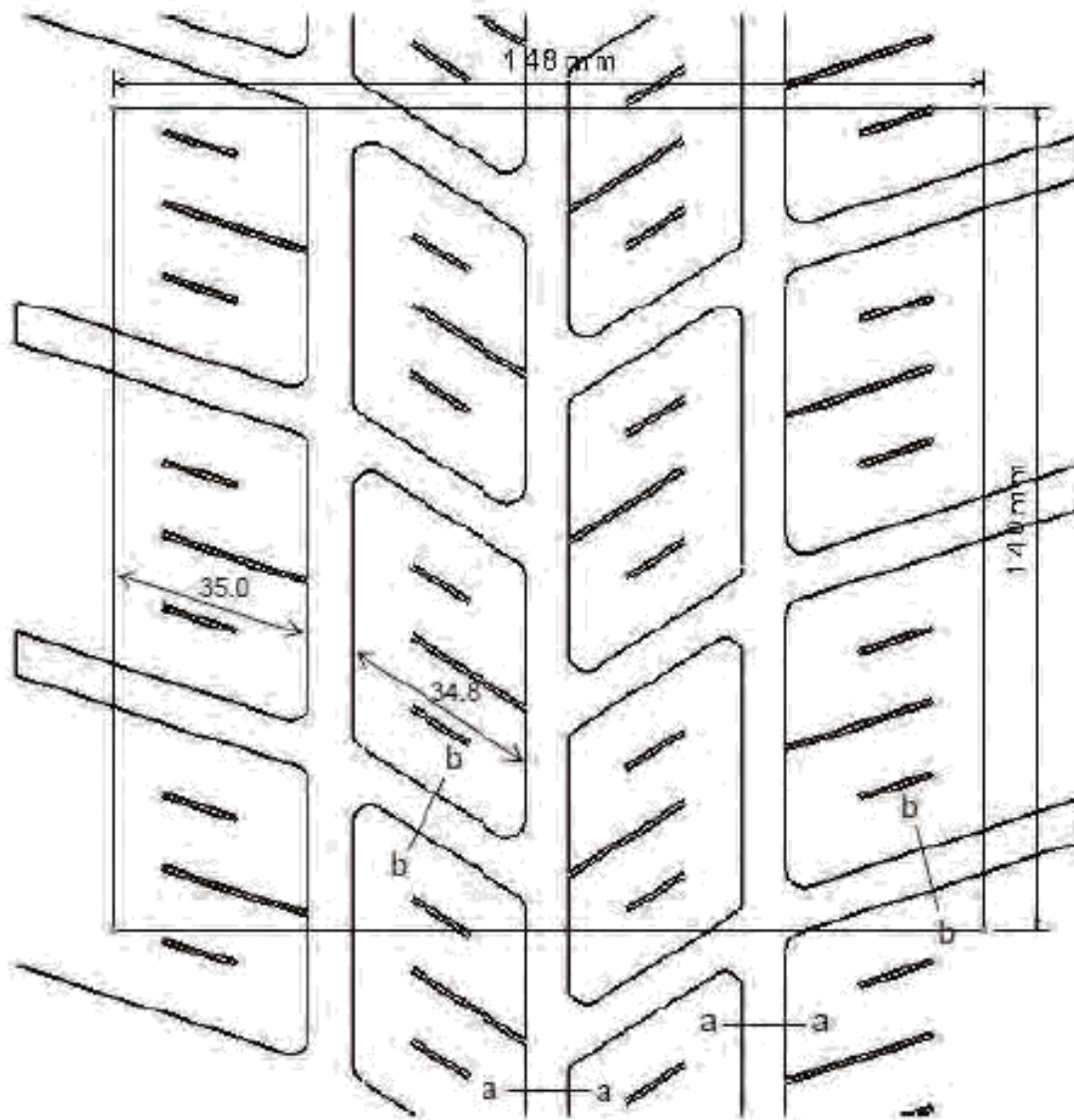
Empty Depth > 5.5mm : 27.5%

Control Surface = 20720 mm²



16" - 180/600R16

Product : Ventus Z210



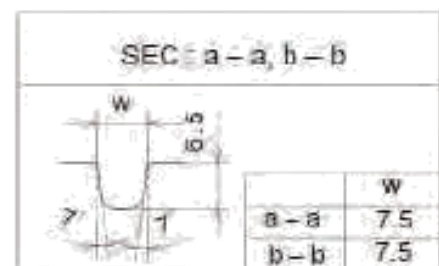
Width of Rim/Tyre Assembly : 7.5" ~ 8"

a - a groove width / depth : 7.5 mm / 6.5 mm

b - b groove width / depth : 7.5 mm / 6.5 mm

Empty Depth > 5.5mm : 27.5%

Control Surface = 20720 mm²



18"-210/645R18



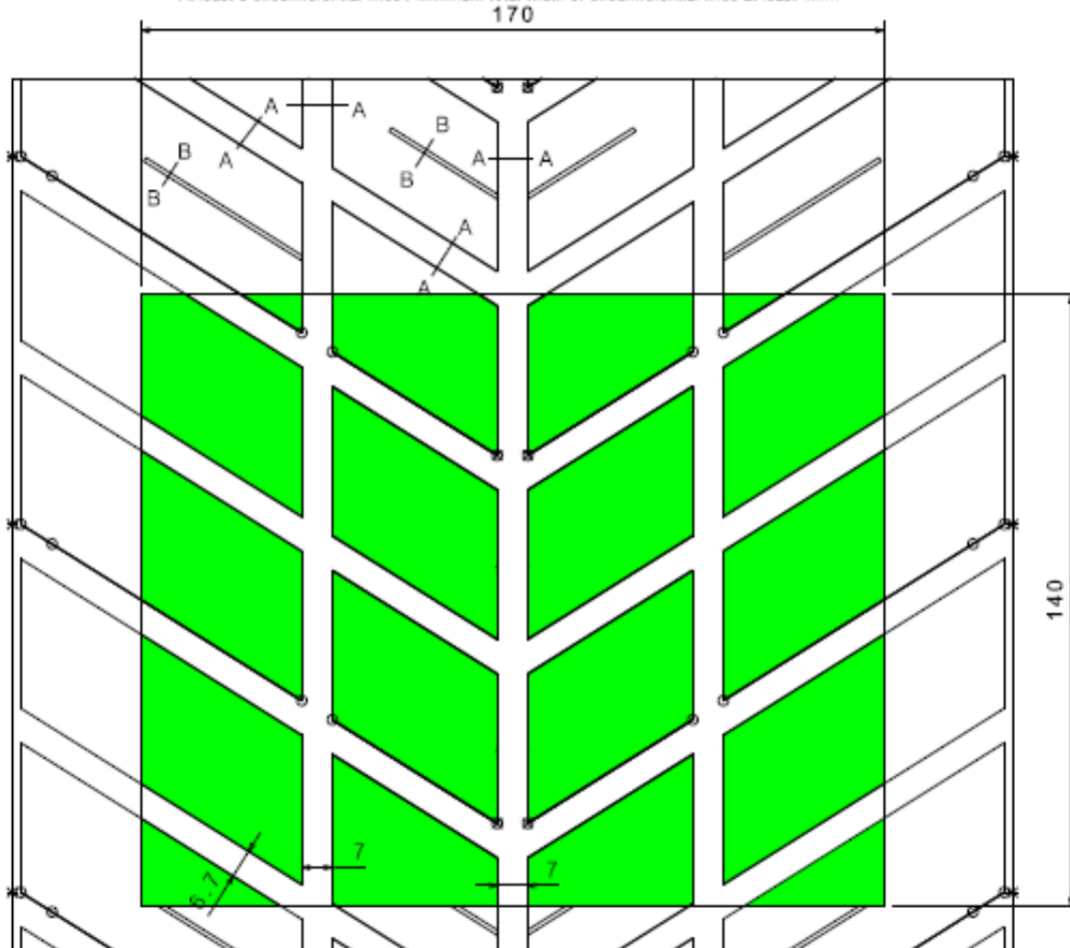
KUMHO TYRES

Moulded tyre for FIA homologation

Size : 210/645R18

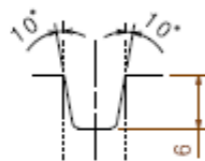
Pattern : TW03

- On the basis of a tread pattern width of 170mm and circumference of 140mm
- The surface taken up by grooves at least 5.5mm deep must occupy at least 27.5% of the total surface.
 - The sum of the width of the grooves encountered by a radial line must be at least 16mm
 - At least 3 circumferential lines / Minimum total width of circumferential lines at least 4mm

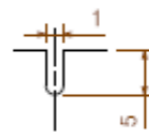


Scale: 1:1

Groove Area by 170 x 140 at least 5.5mm deep : 6789.4mm²
Void % : 28.5%



SEC.A-A

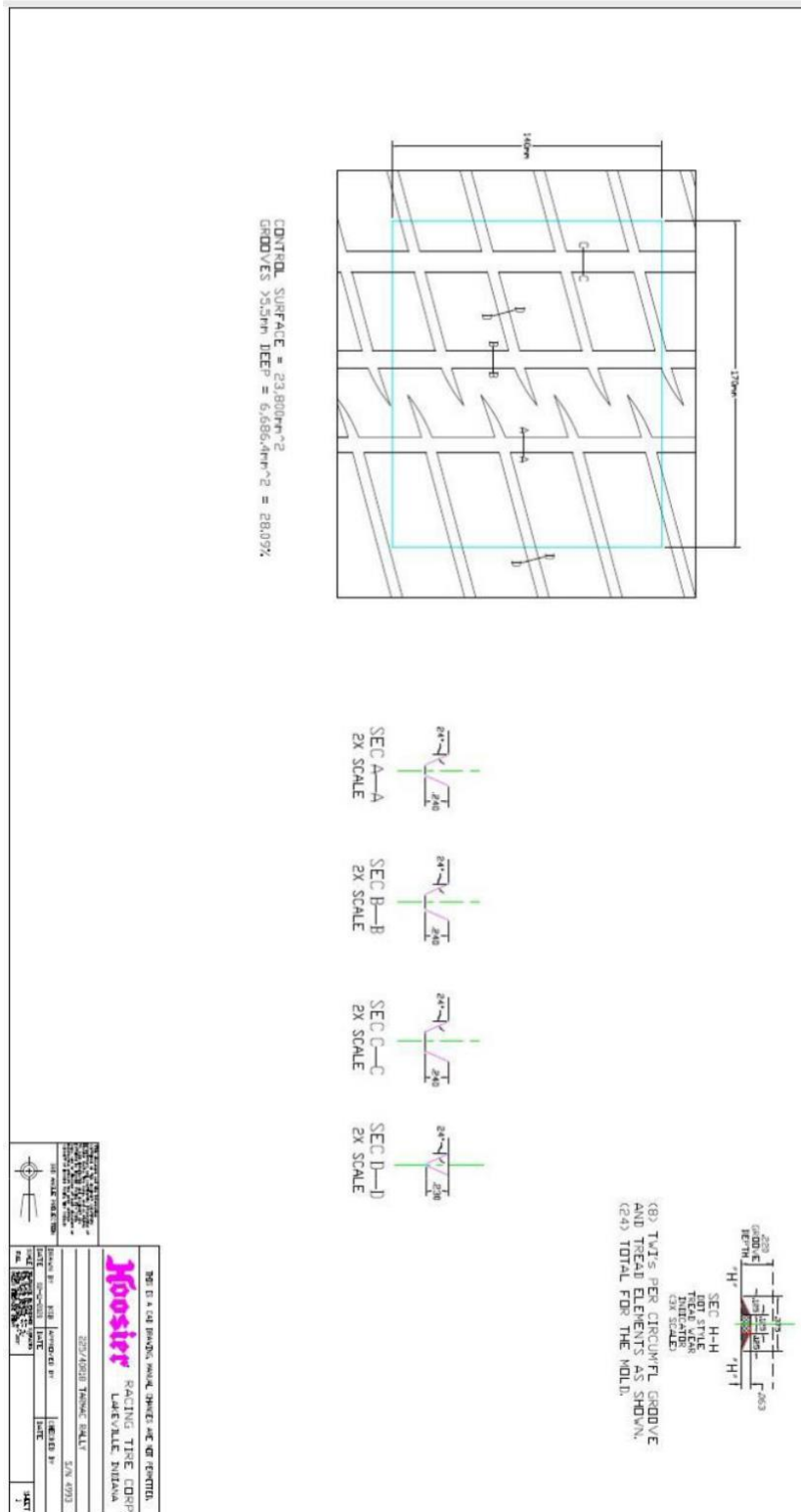


SEC.B-B

18"-225/40R18

Hoosier

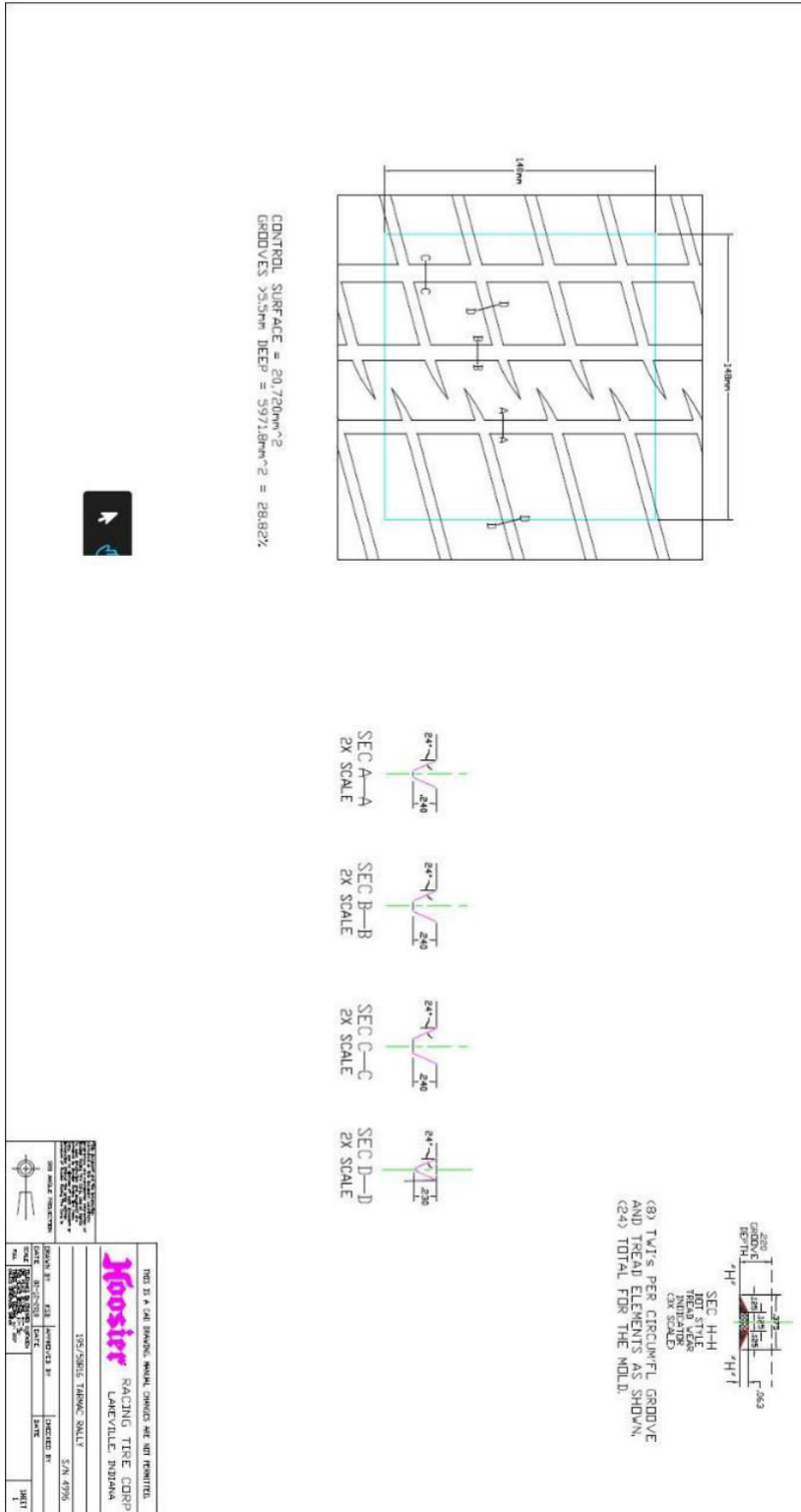
RACING TIRE



16"-195/50R16

Hoosier

RACING TIRE

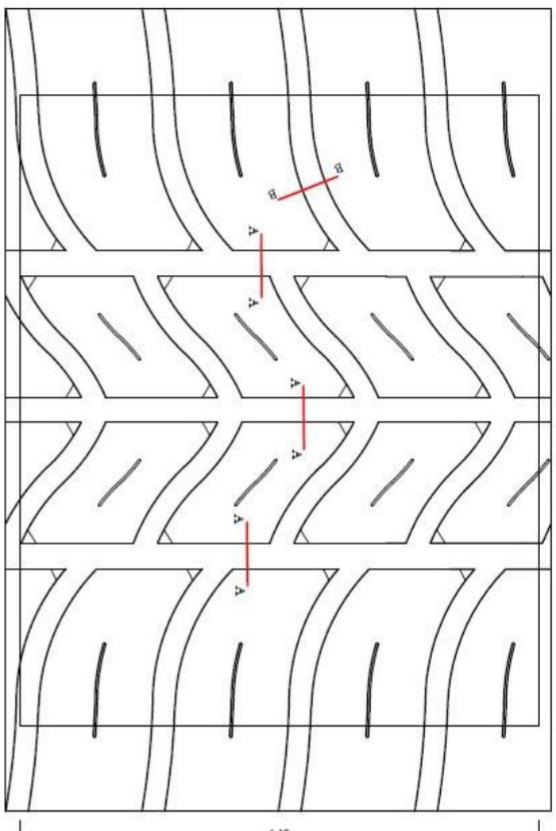




MRF TYRES



MRF 235/40R18 ZWR1 TL



In the control area 170x140 mm (indicated in the dotted line)

Grooved area within Min. 5.5 mm deep grooves > 27.5%

The total width of the circumferential line is >12 mm

The sum of the width of the grooves encountered by a radial line is >16 mm

CLASS 9"
RIM 8.0"



S.No.	DATE	DESCRIPTIONS	DRAWN	VPRO / PDM

CHENNAI		INDIA	
MRF		APPROVED	
SIGNATURE	G. Karthikeyan	T.N. Sridhar	SCALE
DATE	10.02.2020	VPRO / PDM	NTS

F.I.A COMPLIANCE FOR 235/40R18 ZWR1 TL		CORPORATE TECHNICAL MOLD DESIGN		DRG No. RR-235/40R18_0720		REVISION No.	
SAP DOCUMENT TYPE	SAP DOCUMENT No.	VER	1				

IF IN DOUBT ASK...
NOT TO SCALE

At dimension on 1 mm. When otherwise specified.

THE DRAWING IS THE PROPERTY OF MRF LTD. WE DO NOT LEND OR REPRODUCE WITHOUT THE WRITTEN PERMISSION OF THE MRF LTD. AND WILL NOT BE REPRODUCED, COPIED OR OTHERWISE USED FOR ANY PURPOSES WITHOUT THE WRITTEN PERMISSION OF MRF LTD. ANY UNAUTHORIZED REPRODUCTION OR USE OF THIS DRAWING WILL BE CONSIDERED AS AN ACT OF VIOLATION OF THE PATENT RIGHTS OF MRF LTD. AND WILL BE PROSECUTED TO THE FULL EXTENT OF THE LAW.



MRF TYRES

MRF **205 / 45 R17 ZWR1 TL**

148.0

140.0

SECTION: A-A

10° 10° 2

F.I.A. COMPLIANCE FOR 205 / 45 R17 ZWR1 TL

IN THE CONTROL AREA 148 x 140 mm (Indicated in the Dotted Line)

Grooved area within Min. 5.5 deep grooves > 27.5%

The total width of the circumferential line is >12 mm

The sum of the width of the grooves encountered by radial line is >16 mm

CLASS 8"
RIM 7.0"

S.N.	DATE	DESCRIPTION	HEAD	YRMO / RMO

CHEMUNU

INDIA

CHECKED/ISSUED

APPROVED

SCALE

DESIGNED	OLYMPIAN	DRAWN	MECHANICAL DESIGN	ENGRG / RMO	MS
DATE	14.02.2025				

F.I.A. COMPLIANCE FOR 205 / 45 R17 ZWR1 TL

COMPONENT TECHNICAL MODEL NUMBER: **FA-0001**

DATE OF DOCUMENT: **14.02.2025**

SCALE: **1:1**

F.I.A. COMPLIANCE FOR 205 / 45 R17 ZWR1 TL

IN THE CONTROL AREA 148 x 140 mm (Indicated in the Dotted Line)

Grooved area within Min. 5.5 deep grooves > 27.5%

The total width of the circumferential line is >12 mm

The sum of the width of the grooves encountered by radial line is >16 mm

CLASS 8"
RIM 7.0"

S.N.	DATE	DESCRIPTION	HEAD	YRMO / RMO

CHEMUNU

INDIA

CHECKED/ISSUED

APPROVED

SCALE

DESIGNED	OLYMPIAN	DRAWN	MECHANICAL DESIGN	ENGRG / RMO	MS
DATE	14.02.2025				

F.I.A. COMPLIANCE FOR 205 / 45 R17 ZWR1 TL

COMPONENT TECHNICAL MODEL NUMBER: **FA-0001**

DATE OF DOCUMENT: **14.02.2025**

SCALE: **1:1**



MRF TYRES

MRF 195 / 50 R16 ZWR1 TL

148.0

140.0

CLASS 8"

RIM 6.5"

In the control area 148 x 140 mm (Indicated in the Dotted Line)

Grooved area within Min. 5.5 deep grooves > 27.5%

The total width of the circumferential line is >12 mm

The sum of the width of the grooves encountered by radial line is >16 mm

S/N	DATE	DESCRIPTION	STATUS	HEAD	WORLD	UNIT

CHENNAI		MRF		NOVA	
DESIGNER	DRONE/SUBS	APPROVED	SCALE		

F.I.A COMPLIANCE FOR 195/50 R16 ZWR1TL

COMPANIE TECHNICAL WOULD DESIGN DRG No. F/A-0002

SAP DOCUMENT TREC SAP DOCUMENT No. YES NO

REVISION 00

IF YOU DOUBT ASK. IS NOT SURE THE DRAWING. IF YOU DOUBT ASK. IF YOU DOUBT ASK. IF YOU DOUBT ASK.

THIS DRAWING IS THE PROPERTY OF MRF TYRES. ALL RIGHTS RESERVED. NO PART OF THIS DRAWING IS TO BE REPRODUCED OR TRANSMITTED IN ANY FORM OR BY ANY MEANS, ELECTRONIC OR MECHANICAL, INCLUDING PHOTOCOPYING, RECORDING, OR BY ANY INFORMATION STORAGE AND RETRIEVAL SYSTEM. WITHOUT THE WRITTEN PERMISSION OF MRF TYRES. THIS DRAWING IS THE PROPERTY OF MRF TYRES. ALL RIGHTS RESERVED. NO PART OF THIS DRAWING IS TO BE REPRODUCED OR TRANSMITTED IN ANY FORM OR BY ANY MEANS, ELECTRONIC OR MECHANICAL, INCLUDING PHOTOCOPYING, RECORDING, OR BY ANY INFORMATION STORAGE AND RETRIEVAL SYSTEM. WITHOUT THE WRITTEN PERMISSION OF MRF TYRES.



MRF TYRES

MRF 195 / 50 R15 ZWR1 TL

SECTION: A-A

In the control area 148 x 140 mm (Indicated in the Dotted Line)

Grooved tread within Min. 5.5 deep grooves > 27.5%

The total width of the circumferential line is >12 mm

The sum of the width of the grooves encountered by radial line is >16 mm

CLASS 8"

RIM 6.5"

S.N.	DATE	DESCRIPTION	BY	HEAD (WORLD DESIGN)	VERNO / PDM

CHEMUNDA MRF INDIA

DESIGNED BY: CHEMUNDA MRF

APPROVED BY: CHEMUNDA MRF

DATE: 18.02.2021

SCALE: NTS

F.I.A COMPLIANCE FOR 195/50 R15 ZWR1TL

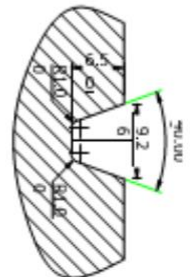
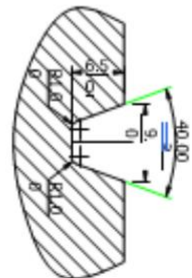
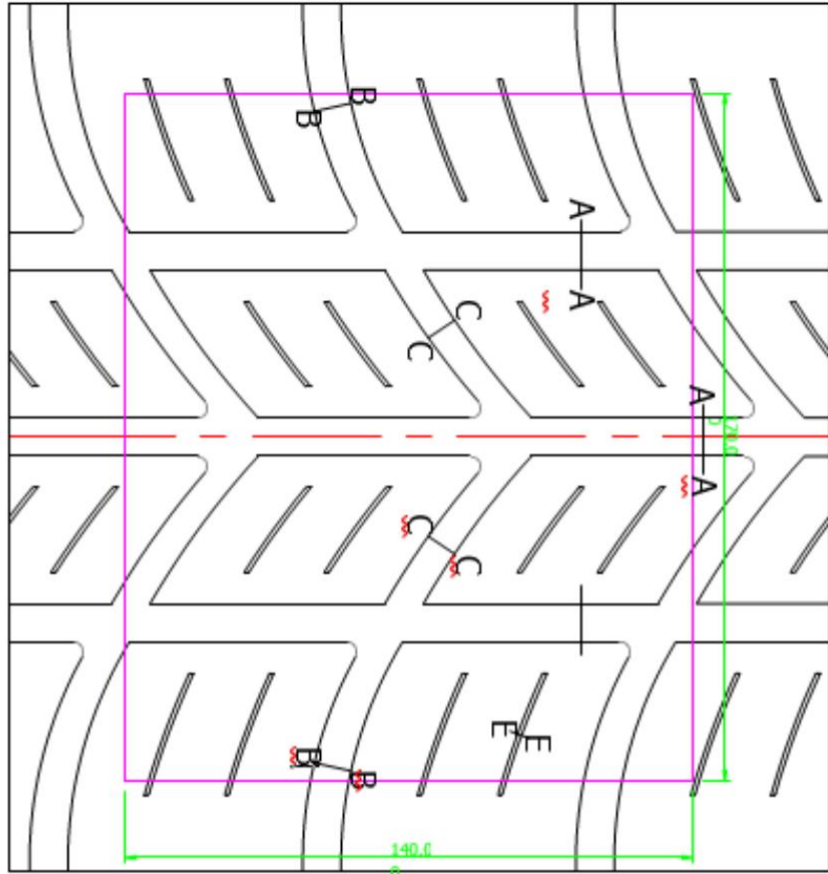
DRAWN BY: CHEMUNDA MRF

DATE: 18.02.2021

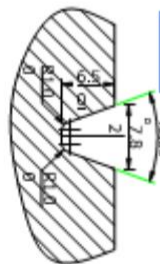
SCALE: NTS

THIS DRAWING IS THE PROPERTY OF MRF LTD. THE USE OF THIS DRAWING FOR ANY OTHER PURPOSES WITHOUT THE WRITTEN PERMISSION OF MRF LTD. IS STRICTLY PROHIBITED. THE USER OF THIS DRAWING SHALL BE RESPONSIBLE FOR ANY DAMAGE OR LOSS OF DATA. THE USER OF THIS DRAWING SHALL BE RESPONSIBLE FOR ANY DAMAGE OR LOSS OF DATA. THE USER OF THIS DRAWING SHALL BE RESPONSIBLE FOR ANY DAMAGE OR LOSS OF DATA.

MRF LTD. SOLELY RESPONSIBLE FOR THE DESIGN AND DEVELOPMENT OF THIS DRAWING. MRF LTD. SOLELY RESPONSIBLE FOR THE DESIGN AND DEVELOPMENT OF THIS DRAWING. MRF LTD. SOLELY RESPONSIBLE FOR THE DESIGN AND DEVELOPMENT OF THIS DRAWING.

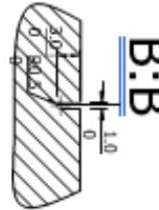


Section A:A
SCALE 2:1



Section C:C
SCALE 2:1

Section B:B
SCALE 2:1



Section E:E
SCALE 2:1

DRAWING REFERENCES		APPROVED BY	
DIMENSIONS	UNITS	DATE	SCALE
COOPER TIRES & RUBBER EUROPE LTD. MILKSHAM WILTSHIRE ENGLAND.	MM	11/12/13	A3
		DATE	SCALE
		11/06/21	A3
		REV	15P
		DATE	11/06/21

Grooved Area with min 5.5mm > 27.5%

ATUALIZAÇÕES

Art. / Data	Estado	Art. / Data	Estado	Art. / Data	Estado

--	--